

e.dot+™ Electric Guns



Compact electric guns precisely dispense small dots or beads of hot melt adhesive at high speeds.

Nordson e.dot+ electric guns:

- Deliver accurate dot or bead placement
- Require minimal space for installation and service
- Install quickly and easily
- Operate quietly

Fast-acting coil delivers small dots/beads at fast line speeds

Reduced cavity nozzle dispenses consistent dots/beads at varying line speeds



Integrated Saturn® filter removes contaminants from adhesive flow path

Quick-disconnect cordset simplifies installation

All-electric e.dot+ guns provide precise, high-speed dot or bead placement, quiet operation, a long service life and compact size.

Easy to install e.dot+ guns operate in combination with a specially-designed small diameter hose and an external gun driver, allowing direct *plug and play* connections between the adhesive melter, gun, driver and hose. Nordson e.dot+ guns have on-times as low as 0.4 ms and cycle rates as fast as 1.8 ms*, and a service life in excess of 200 million cycles.

The ball and nozzle/seal design provides excellent repeatability, pattern control and consistency, delivering superior dot patterns and minimizing adhesive stringing or tailing. The e.dot+ gun features a removable armature and seat and interchangeable nozzles, allowing for easy maintenance. Manual stroke adjustment allows for re-zeroing of the module after servicing. The e.dot+ module coil connector allows fast module exchange.

The all-electric design of the e.dot+ gun eliminates the need for compressed operating air, dynamic seals and frequent module maintenance. An integrated Saturn filter simplifies maintenance and is necessary for clean operation.

* Dependent on adhesive viscosity

Specifications

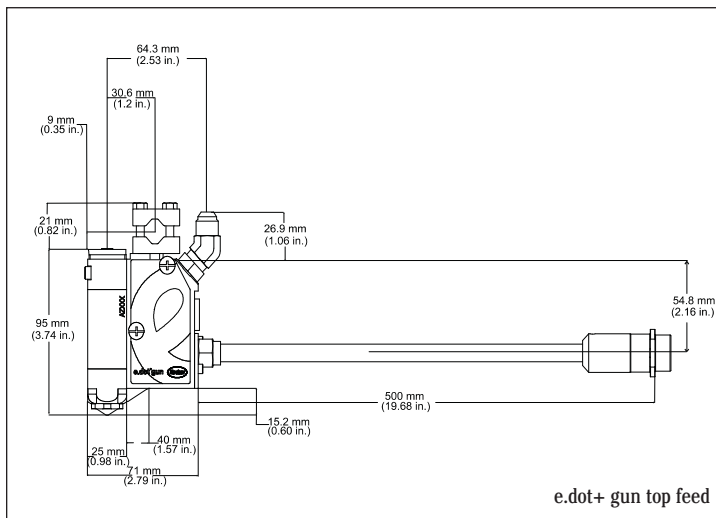
Maximum Hydraulic Pressure	10,000 kPa (100 bars/1450 psi)	Operating Temperature	365° F (185° C), max 392°F (200°C)**
Maximum Operating Pressure	4800 kPa (48 bars/700 psi)	Electrical Requirements	See gun driver specifications
Working Viscosity	1000 cps, max 5000 cps	Heating Method	Cartridge heater
Cycle Speed	1.8 ms*	Integrated Saturn Filter	200 mesh
Electrical Connections	Quick-disconnect		

* minimum on-time 0.4 ms viscosity dependent; use e.dot+ application guide.

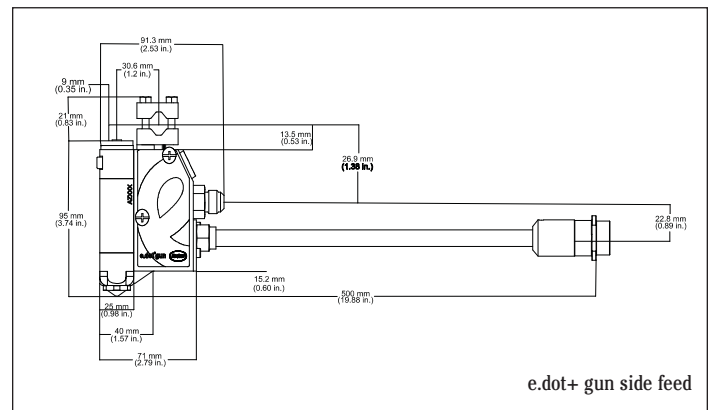
** dependent on pattern; use e.dot+ application guide.

Gun Driver Specifications

	LogiComm® Control System	LogiComm OEM Gun Driver Board	LogiComm Gun Driver	e driver Single Box
Capacity	4/8 channels per board	4 channels per board	4/8 channels per board	1 channel
Electrical Service	100-240 VAC, 50/60 Hz	110-230 VAC, 50/60 Hz; 24 VDC	100-240 VAC, 50/60 Hz	170 to 264 VAC, 50/60 H
Maximum Gun Power				
Capacity	160 Watts	110 Watts	160 Watts total	95 Watts
Input Line Fuses	3 Amps	2 Amps	3 Amps	2 Amps
Trigger Source Options	NPN or PNP (24 VDC sink/source)	24 VDC	NPN or PNP	24 VDC and 5 VDC
Enclosure Rating	IP-30	IP-20	IP-X4 terminal block version IP-30 connector version	IP-20



e.dot+ gun top feed



e.dot+ gun side feed



For more information, talk with your Nordson representative or contact your Nordson regional office.

United States

Duluth, Georgia

Telephone: (800) 683-2314

Toll-free Facsimile:

(866) 667-3329

Canada

Markham, Ontario

Telephone: (800) 463-3200

Facsimile: (905) 475-8821

Europe

Lüneburg, Germany

Telephone: (49) 4131-894-0

Facsimile: (49) 4131-894-149

Japan

Tokyo, Japan

Telephone: (81) 3-5762-2700

Facsimile: (81) 3-5762-2701

Asia/Australia/

Latin America

Amherst, Ohio

Telephone: (440) 985-4797

Facsimile: (440) 985-1096

www.nordson.com



When you expect more.®